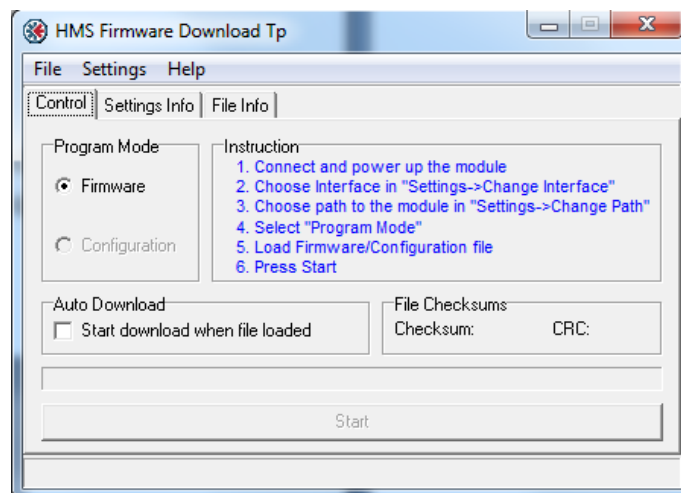


# Firmware Download Anybus Communicator CAN



## History

Revision	Date	Description	Responsible
1.00	2011-10-03	First release	KaD

## Contents

1	Applicable Anybus Products .....	2
2	Requirements .....	2
3	Solution Overview.....	2
4	Step-by-Step Guide .....	3

## 1 Applicable Anybus Products

Description	Name / Type
Anybus Communicator	Communicator CAN

## 2 Requirements

Description	Name / Type	Version
Firmware Download TP	Software	2.15.1.1
Anybus Communicator	Communicator CAN	N/A

## 3 Solution Overview

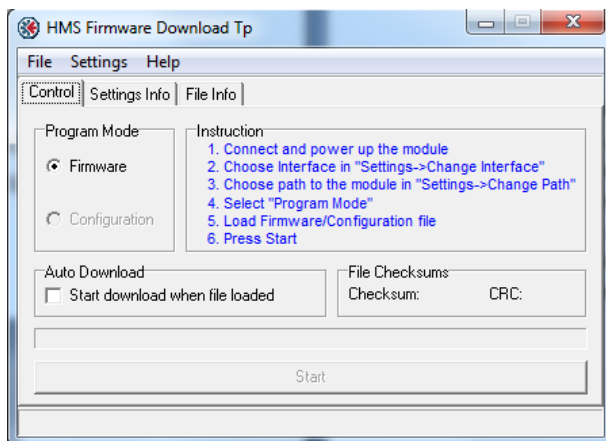
This document describes how to download firmware to the Anybus Communicator CAN, using the Firmware Download TP tool from HMS Industrial Networks.

## 4 Step-by-Step Guide

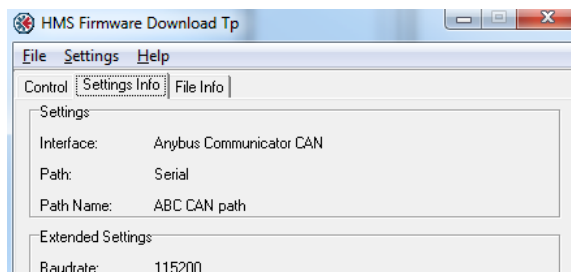
This guide will provide the necessary information needed to update the firmware in the Anybus Communicator CAN, presented in a step-by-step format.

Prior to setup, please contact HMS support to obtain the appropriate firmware upgrade package for your product.

- 1) Download and install the Firmware Download TP tool.  
It is available for download at [www.anybus.com](http://www.anybus.com). To find the latest version, click 'Support'. Then choose 'Support tools' and 'Firmware upgrade tools'.
- 2) Connect and power up the Communicator.
- 3) Start the program.  
The first time the program is started, the interface (product family) may need to be specified. In the list, choose "Anybus Communicator CAN". The main window of the Firmware Download TP tool looks like below:



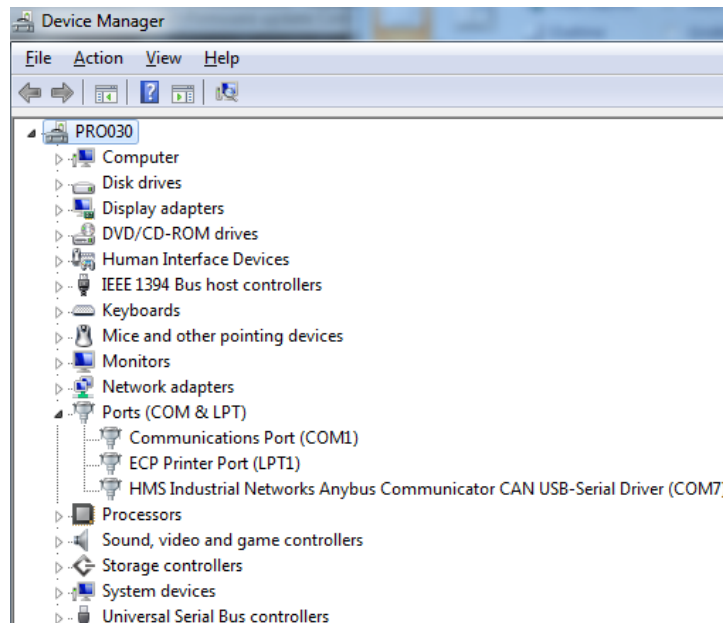
- 4) Choose "Firmware" under Program Mode.
- 5) Select the "Settings Info" menu tab.  
This tab shows the current settings of the Firmware Download TP. These settings will be remembered by the tool between sessions.



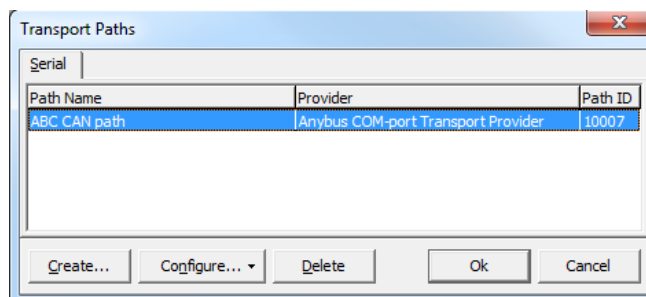
The screenshot above shows the correct settings for the Anybus Communicator CAN. If the settings are correct, proceed to step 8. If not, continue with step 6.

- 6) Click on menu item "Settings" and choose "Change Interface". Select "Anybus Communicator CAN" in the list.

- 7) Click on menu item “Settings” and choose “Change Path”. Select baud rate “115200”. In the configuration window that appears, click “Create”.
  - Select menu tab “Serial”.
  - Highlight option “COM-Port Transport Provider”. Click “Ok”.
  - Name the path (for example, “ABC CAN path”).
  - Select the COM-Port number. (If the COM-Port number is not known, follow the instructions below).
    - Open the Control Panel and find the Device Manager. Expand the item “Ports (COM & LPT)” as shown below.



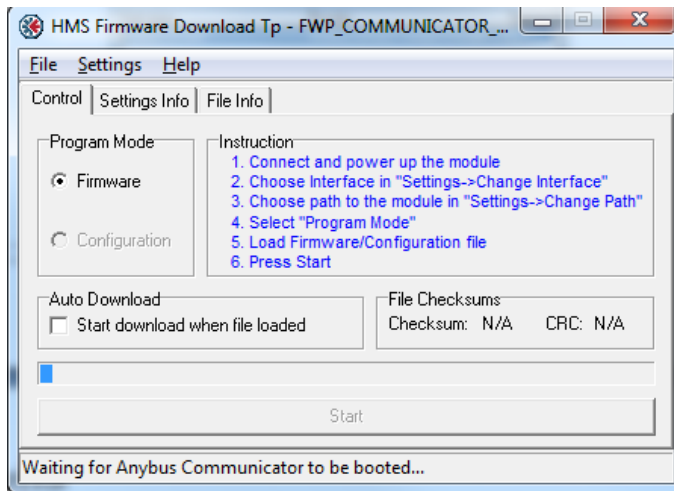
- Among the expanded subitems, find the line labelled “...Anybus Communicator CAN...”. The COM-Port number will be found to the right of the label, in brackets.
  - Select the same number in the COM-Port number list of the Firmware Download TP tool.
- A fully specified path has been configured. A window similar to the one below will appear.



Click “Ok” to go back to the main window.

- 8) Choose the menu item “File” and then “Load”. Find the appropriate firmware file in the browser and click “Open” (The firmware file from HMS support will have file extension “.fwp”).

- 9) Back in the main window, press the button “Start”. The message “Waiting for Anybus Communicator to be booted...” will appear at the bottom of the window.



- 10) Power cycle (turn it off and turn it on) the Anybus Communicator to start the download of the new firmware.
- 11) After the firmware download is complete, restart the Communicator for the changes to take effect. The Communicator will finish the firmware download by executing a factory reset. When finished, the GW LED will alternate between green and red, indicating “Missing configuration”.