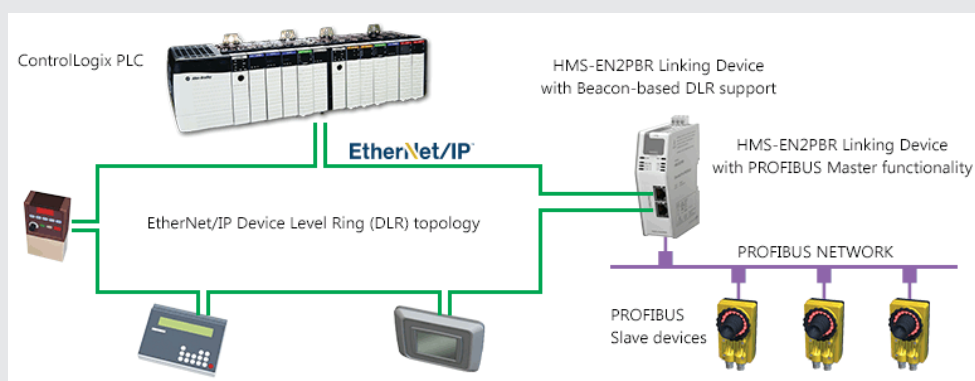
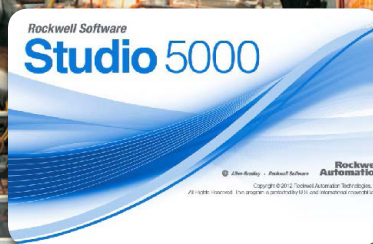


The EtherNet/IP to PROFIBUS Linking Device allows you to connect any PROFIBUS device or system to your ControlLogix™ and CompactLogix™ PLC from Rockwell Automation. The stand-alone Linking Device is less expensive than an in-chassis-based solution, and is tightly integrated into Rockwell Studio5000.



The EtherNet/IP to PROFIBUS Linking Device from HMS integrates industrial devices communicating via PROFIBUS with a Rockwell PLC. You do all configuration in your familiar Rockwell Studio 5000 environment.

In short:

EtherNet/IP Adapter Class product which is tightly integrated to Rockwell Studio5000 allowing you to connect PROFIBUS devices to Rockwell PLCs.

Catalog number:

HMS-EN2PB-R

The EtherNet/IP to PROFIBUS DP Linking Device will:

- Minimize costs when connecting PROFIBUS devices to your PLC. More cost-efficient than an in-chassis solution.
- Allow you to easily retrofit existing PROFIBUS devices.
- Allow you to support "Big Data" — up to 7000 bytes of I/O data.
- Speed up configuration — Automated process inside Rockwell Studio5000.
- Remove the need for long and expensive proprietary cable by using Ethernet cables for the longest distance.

Technical highlights

- Custom Add-On Profile: simplifies configuration and reduces commissioning time, dynamically generates data structures. No need for any ladder logic or Add On Instructions.
- Complete PROFIBUS DP/DPV1 Master functionality according to IEC 61158 supporting up to 125 slaves.
- Routing of acyclic data. Predefined CIP objects available for specific PROFIBUS DPV1 services and functions including Class 1 and 2 read&write requests.
- Does not affect backplane performance (PLC execution time), even when large amount of data is transferred to the ControlLogix PLC.
- EtherNet/IP Adapter Class product supporting DLR.
- Supports the generation of Process Variable Data Tags and automatic generation of named and structured Studio 5000 controller tags.
- ODVA, CE, UL, ATEX and Haz.Loc. certifications.

Integrated into Studio5000



All network and device configuration is done within Studio 5000.

See how it works at www.encompass.hms-networks.com

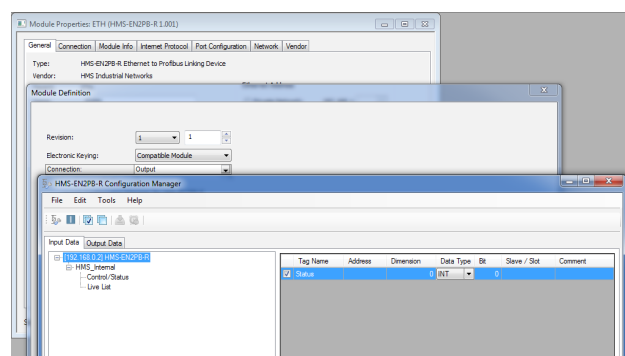
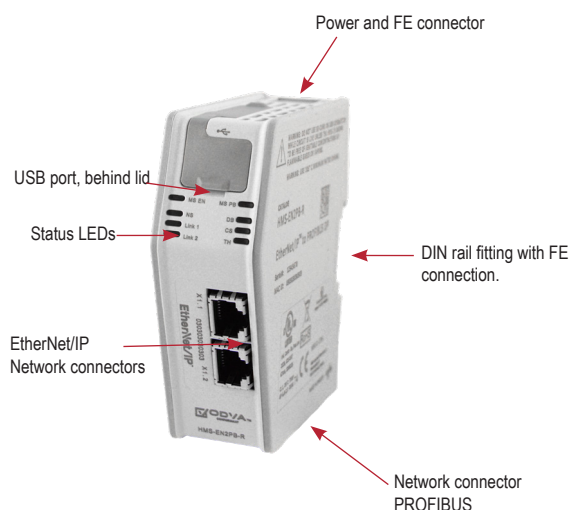


HMS provides a full 3 year product guarantee



TECHNICAL SPECIFICATIONS

EtherNet/IP Linking Device for PROFIBUS DP		
Max amount of slaves	125	
Network connector	One DSUB 9-pin female connector and two RJ45 connectors	
EtherNet/IP baud rate	10/100 Mbit/s	
PROFIBUS baud rate	9600 bit/s to 12 Mbit/s	
I/O data	3500 bytes Input and 3500 Output	
Technical Details		Standard
Weight	184g	
Dimensions (L*W*H)	110*35*101 mm, 4,33*1,38*3,98"	
Protection class	IP20, NEMA rating 1	
Enclosure material	PC ABS, UL 94 VO	
Installation position	Vertical	
Mounting	DIN rail (35*7,5/15) or Wall Mount	EN 50022
Certifications		
UL	Yes	UL 61010-1 UL 61010-2-201
Hazardous Locations	Yes	ANSI/ISA 12.12.01
ATEX	Yes	EN 60079-0 EN 60079-15
CE	Yes	EN 61000-6-2 EN 61000-6-4
Electrical Characteristics		
Power	24VDC (-15% +20%)	
Current consumption	Max 300mA, typical 220mA.	
Hardware Characteristics		
Reverse voltage protection	Yes	
Short circuit protection	Yes	
Galvanic isolation on subnetwork	Yes	
Environmental Characteristics		
Operating temp	-25 to 60 °C, -13 to 140 °F	IEC 60068-2-1 IEC 60068-2-2
Storage temp	-40 to 85 °C, -40 to 185 °F	IEC 60068-2-1 IEC 60068-2-2
Relative Humidity	5-95 % non condensing	IEC 60068-2-30
Installation altitude	Up to 2 000 m	
Immunity and Emission for Industrial Environment		
Electrostatic discharge	+/- 4 kV	EN 61000-4-2
Electromagnetic RF fields	10 V/m 80 MHz - 1 GHz 3 V/m 1,4 GHz - 2,0 GHz 1 V/m 2,0 GHz - 2,7 GHz	EN 61000-4-3
Fast Transients	+/- 1 kV	EN 61000-4-4
Surge protection	+/- 1 kV	EN 61000-4-5
RF conducted interference	10 V/rms	EN 61000-4-6
Emission (at 10 m)	40 dB 30 MHz - 230 MHz 47 dB 30 MHz - 1 GHz	EN 55016-2-3
Insulation, transient voltage (not for personal safety)		
Power to PE	1 500 V	EN 60950-1
Power to X1	2 500 V	EN 60950-1
Power to X2	1 500 V	EN 60950-1
X2 to PE	500 V	EN 60950-1
X2 Shields to PE	500 V	EN 60950-1
X2 to X2 Shields	500 V	EN 60950-1
X2.1 to X2.2	500 V	EN 60950-1
Included components		
• Installation guide		



The configuration is integrated into Rockwell Studio5000. With a click of the mouse, you start the configurator for the Linking Device.

HMS Industrial Networks – Worldwide

HMS - Sweden (HQ)

Tel : +46 35 17 29 00 (Halmstad HQ)
E-mail: sales@hms-networks.com

HMS - Finland

Tel: +358 404 557 381
E-mail: sales@hms-networks.com

HMS - Italy

Tel: +39 039 59662 27
E-mail: it-sales@hms-networks.com

HMS - UK

Tel: +44 1926 405599
E-mail: uk-sales@hms-networks.com

HMS - China

Tel : +86 010 8532 3183
E-mail: cn-sales@hms-networks.com

HMS - Germany

Tel: +49 721 989777-000
E-mail: ge-sales@hms-networks.com

HMS - Japan

Tel: +81 45 478 5340
E-mail: jp-sales@hms-networks.com

HMS - United States

Tel: +1 312 829 0601
E-mail: us-sales@hms-networks.com

HMS - France

Tel: +33 368 368 034 (Mulhouse office)
E-mail: fr-sales@hms-networks.com

HMS - India

Tel: +91 83800 66578
E-mail: in-sales@hms-networks.com

HMS - Switzerland

Tel: +41 61 511342-0
E-mail: sales@hms-networks.ch

Anybus® is a registered trademark of HMS Industrial Networks AB, Sweden, USA, Germany and other countries. Other marks and words belong to their respective companies. All other product or service names mentioned in this document are trademarks of their respective companies.

Part No: MMA431 Version 6 03/2019 - © HMS Industrial Networks - All rights reserved - HMS reserves the right to make modifications without prior notice.

