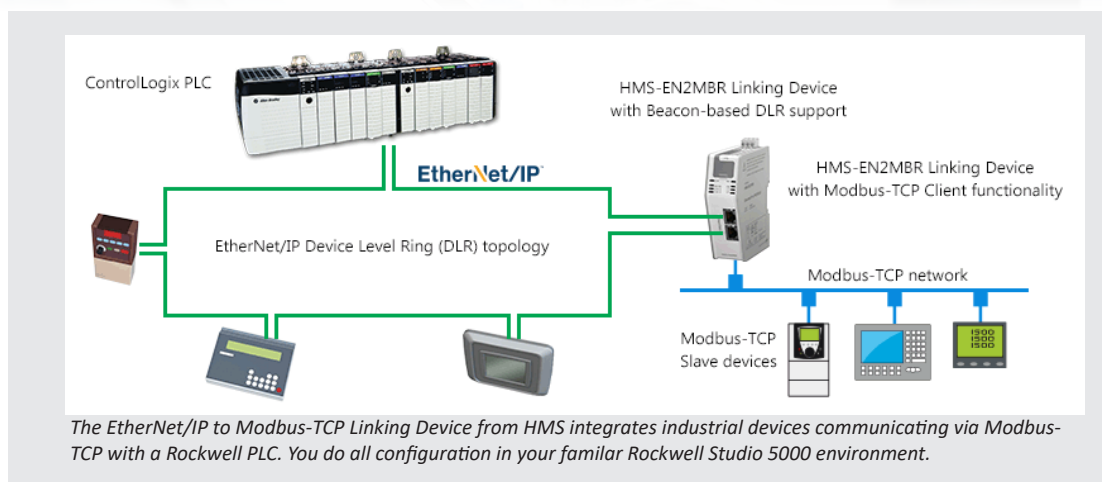
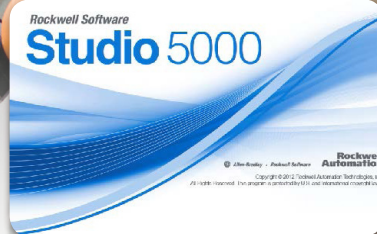


The EtherNet/IP to Modbus-TCP Linking Device allows you to connect any Modbus-TCP device or system to your ControlLogix™ and CompactLogix™ PLC from Rockwell Automation. The stand-alone Linking Device is less expensive than an in-chassis-based solution, and has even better integration to Studio 5000® from Rockwell Automation.



In short:

EtherNet/IP Adapter Class product which is tightly integrated to Rockwell Studio5000 allowing you to connect Modbus-TCP devices to Rockwell PLCs.

Catalog number:

HMS-EN2MB-R

The EtherNet/IP to Modbus-TCP Linking Device will:

- Minimize costs when connecting Modbus-TCP server devices (slaves) to your PLC. More cost-efficient than an in-chassis solution.
- Allow you to easily retrofit existing Modbus-TCP devices.
- Allow support for "Big data" — up to 8 KB of I/O data.
- Speed up configuration — Automated process inside Rockwell Studio5000.

Technical highlights

- Custom Add-On Profile: simplifies configuration and reduces commissioning time, dynamically generates data structures. No need for any ladder logic or Add On Instructions.
- Connects up to 64 servers (slaves), connections and transactions.
- Does not affect backplane performance (PLC execution time), even when large amount of data is transferred to the PLC.
- EtherNet/IP Adapter Class product supporting Beacon-based DLR.
- Automatically generates named and structured Studio 5000 controller tags based on the configuration — no need for add-on instructions or creating alias tags.
- ODVA, CE and UL certifications (ATEX and Haz.Loc. certifications pending)

Integrated into Studio5000



All network and device configuration is done within Studio 5000.

See how it works at www.encompass.hms-networks.com

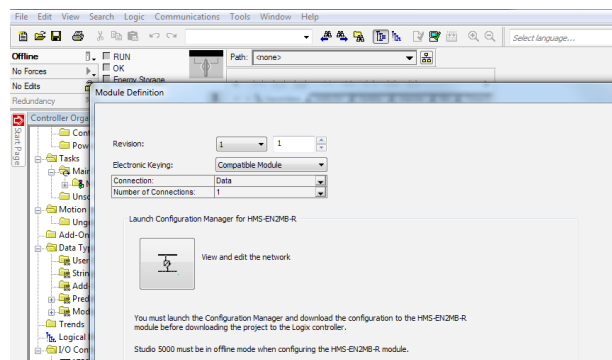
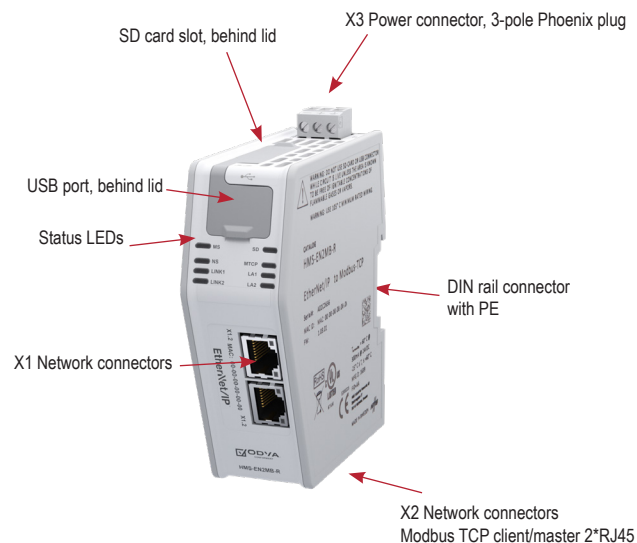


HMS provides a full 3 year product guarantee



TECHNICAL SPECIFICATIONS

EtherNet/IP to Modbus-TCP Linking Device		
Max amount of slaves	64	
Network connector	Two RJ45 for Modbus-TCP and two RJ45 for EtherNet/IP	
Baud rate	10/100 Mbit/s	
I/O data	4 KB Input and 4 KB Output	
Supported Modbus-TCP functions	1, 2, 3, 4, 5, 6, 15, 16, 23	
Technical Details		Standard
Weight	160 g, 0,35 lb	
Dimensions (L*W*H)	110*35*101 mm, 4,33*1,38*3,98"	
Protection class	IP20, NEMA rating 1	
Enclosure material	PC ABS, UL 94 VO	
Installation position	Vertical	
Mounting	DIN rail (35*7,5/15) or Wall Mount	EN 50022
Certifications		
UL	Yes	
Hazardous Locations	Pending	
ATEX	Pending	
CE	Yes	
ODVA	Yes	
Electrical Characteristics		
Power	24 VDC +/- 10 %	
Current consumption	Typical 150 mA @ 24 V	
Hardware Characteristics		
Reverse voltage protection	Yes	
Short circuit protection	Yes	
Galvanic isolation on subnetwork	Yes	
Environmental Characteristics		
Operating temp	-25 to 70 °C, -13 to 158 °F	IEC 60068-2-1 IEC 60068-2-2
Storage temp	-40 to 85 °C, -40 to 185 °F	IEC 60068-2-1 IEC 60068-2-2
Relative Humidity	5-95 % non condensing	IEC 60068-2-30
Installation altitude	Up to 2 000 m	
Immunity and Emission for Industrial Environment		
Electrostatic discharge	+/- 4 kV	EN 61000-4-2
Electromagnetic RF fields	10 V/m 80 MHz - 1 GHz 3 V/m 1,4 GHz - 2,0 GHz 1 V/m 2,0 GHz - 2,7 GHz	EN 61000-4-3
Fast Transients	+/- 1 kV	EN 61000-4-4
Surge protection	+/- 1 kV	EN 61000-4-5
RF conducted interference	10 Vrms	EN 61000-4-6
Emission (at 10 m)	40 dB 30 MHz - 230 MHz 47 dB 30 MHz - 1 GHz	EN 55016-2-3
Insulation, transient voltage (not for personal safety)		
Power to PE	1 500 V	EN 60950-1
Power to X1	2 500 V	EN 60950-1
Power to X2	1 500 V	EN 60950-1
X2 to PE	500 V	EN 60950-1
X2 Shields to PE	500 V	EN 60950-1
X2 to X2 Shields	500 V	EN 60950-1
X2.1 to X2.2	500 V	EN 60950-1
Included components		
Installation guide		



The configuration is integrated into Rockwell Studio5000. With a click of the mouse, you start the configurator for the Linking Device.

HMS Industrial Networks – Worldwide

HMS - Sweden (HQ)

Tel : +46 35 17 29 00 (Halmstad HQ)
Tel: +46 35 17 29 24 (Västerås office)
E-mail: sales@hms-networks.com

HMS - China

Tel : +86 010 8532 3183
E-mail: cn-sales@hms-networks.com

HMS - France

Tel: +33 368 368 034 (Mulhouse office)
E-mail: fr-sales@hms-networks.com

HMS - Germany

Tel: +49 721 989777-000
E-mail: ge-sales@hms-networks.com

HMS - India

Tel: +91 83800 66578
E-mail: in-sales@hms-networks.com

HMS - Italy

Tel : +39 039 59662 27
E-mail: it-sales@hms-networks.com

HMS - Japan

Tel: +81 45 478 5340
E-mail: jp-sales@hms-networks.com

HMS - Switzerland

Tel: +41 61 511342-0
E-mail: sales@hms-networks.ch

HMS - UK

Tel: +44 1926 405599
E-mail: uk-sales@hms-networks.com

HMS - United States

Tel: +1 312 829 0601
E-mail: us-sales@hms-networks.com