

Anybus Wireless Bridge enables you create a robust wireless connection in an industrial Ethernet network. This second generation of the proven and trusted product can communicate via both Bluetooth and Wireless LAN and is ideal for communication through hazardous areas or hard-to-reach locations where cables are not desirable.

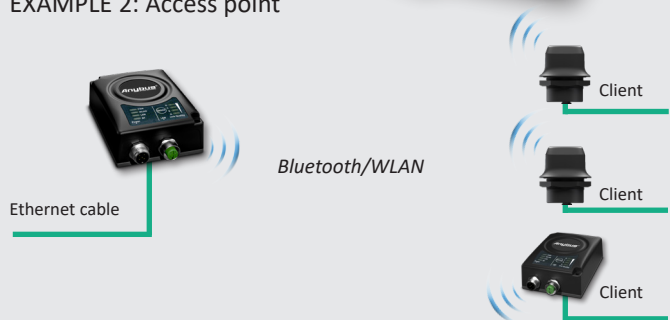


EXAMPLE 1: Point-to-point



Replacing an industrial Ethernet cable.

EXAMPLE 2: Access point



The Wireless Bridge can act as an access point connecting up to seven different clients. This example shows connection to several Anybus Wireless Bolts and one Wireless Bridge. The Anybus Wireless Bridge and Bolt work seamlessly together.

Availability

AWB3000

Ethernet bridge via Bluetooth and WLAN.
2.4 GHz/5 GHz. Internal antennas.

AWB3003

Anybus Wireless Cable kit:

- 2 pcs Anybus Wireless Bridge II (AWB3000 internal antennas)
- 2 pcs Ethernet cables 2 meters, M12 + open leads
- 2 pcs "click mount" Ethernet RJ45 connectors
- 2 pcs Power cables 2 meters M12 + open leads

AWB3010

Ethernet bridge via Bluetooth and WLAN.
2.4 GHz/5 GHz. External antenna.

Accessories

023040

Accessory Pack: 1.5m Ethernet cables M12/RJ45 and power supply (world).

024700

M12 Connector Kit with screw terminals.

024701

DIN Clip kit with screws.

024702

Extra external antenna. Foldable, dual band. RP-SMA connector.

1.04.0085.00000

Magnetic antenna foot with 1,5 m cable and RP-SMA connector, excl. antenna.

1.04.0085.00003

Screw-mount antenna base with 2 m cable and RP-SMA connector, excl. antenna

Wirelessly bridge industrial Ethernet networks

Use the Anybus Wireless Bridge to create a wireless connection in a PROFINET, EtherNet/IP, Modbus-TCP or BACnet/IP network. You can use the same hardware for both Bluetooth or WLAN communication.

Point-to-point or multipoint

Anybus Wireless Bridge is often used as an Ethernet cable replacement (point-to-point communication). But it can also be used as an access point for several WLAN/Bluetooth nodes within range.

Features and benefits

- Three built in antennas for higher performance and better robustness.
- Operation with Bluetooth Low Energy.
- Range up to 400 meters.
- Rugged design with IP65-classed housing.
- Easy setup via push button or via web configuration pages.
- Full compatibility with Anybus Wireless Bolt — a wireless product for machine mounting.
- Connects to your machine via Ethernet.
- Simultaneous operation of Bluetooth and WLAN allowing for bridging between the two.



HMS provides a full 3 year product guarantee



Which wireless standard?

Use WLAN (aka WiFi) if:

- Interaction with other devices is needed, e.g. Bolt/AWB II to tablet/PC/ phone or WLAN infrastructure.
- WLAN channel frequency planning is possible.
- Higher data throughput speed is necessary.
- Larger file transfers are expected.

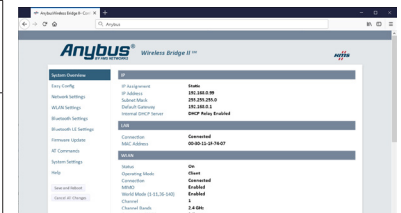
Use Bluetooth if:

- The wireless link has Anybus products in both ends, e.g. Bolt to Bolt, AWB II to AWB II or Bolt to AWB II.
- A robust and reliable link without interruptions is important e.g. in an industrial environment with lots of disturbances, and maybe has been proven not to work well using WLAN.
- A Profinet or Ethernet/IP I/O cycle time of 64ms or higher is acceptable.
- The data throughput speed need is on the lower side.

TECHNICAL SPECIFICATIONS



| | | |
|--------------------------|--|---|
| Type of wired interface | Ethernet | |
| Order code | AWB3000 | AWB3010 |
| Antenna | Three internal antennas: 1. 2.4 GHz 2. 2.4 GHz MIMO 3. 5 GHz | One external antenna: 1. 2.4/5 GHz dual band |
| | (The external antenna does not provide better range, but allows connectivity if the Wireless Bridge needs to be placed inside a radio-secure environment such as a steel cabinet) | |
| Range | Up to 400 meters free line of sight | |
| Operating Temperature | -40 to +65 °C (Storage temp: -40 to +85 °C) | |
| Weight | 120 g | |
| Housing | Plastic PC/ABS (Bayblend FR3010) | |
| Protection class | IP65 | |
| Dimensions | 93 x 68 x 33 mm | |
| Mounting | With two screws (∅ 4 mm) on flat surface. DIN rail mount option available (optional accessory). | |
| Connectors | AWB3000+AWB3010: M12 for Ethernet (4-pin, D-coded), M12 for Power (5-pin, A-coded). AWB3010: RPSMA for external antenna. | |
| Power | 9-30 VDC (-5% +20%), Cranking 12V (ISO 7637-2:2011 pulse 4). Reverse polarity protection. (Consumption: 0.7W idle, 1.7W max.) | |
| Configuration | Three different methods: <ul style="list-style-type: none">• Accessing the built-in web pages in the product• Using Easy Config modes (via push button or inside web interface)• Sending AT-commands via Telnet/Raw TCP | |
| Vibration compatibility: | Sinusoidal vibration test according to IEC 60068-2-6:2007 and with extra severities; Number of axes: 3 mutually perpendicular (X:Y:Z), Duration: 10 sweep cycles in each axis, Velocity: 1 oct/min, Mode: in operation, Frequency: 5-500 Hz. 5-8,4Hz=±3.5mm; 8,4-40,7Hz=1g; 40,7-57Hz=±0,15mm;57-500Hz=2g. Shock test according to IEC 60068-2-27:2008 and with extra severities; Wave shape: half sine, Number of shocks: ±3 in each axis, Mode: In operation, Axes ± X,Y,Z, Acceleration: 30g, Duration: 11 ms. | |
| Humidity compatibility: | EN 600068-2-78: Damp heat, +40°C, 93% humidity for 4 days. | |
| WIRELESS STANDARDS | | |
| Wireless LAN | Wireless standards: WLAN 802.11 a, b, g, n, d, r(fast roaming). Operation modes: Access point or Client WiFi channels: Client: Supported channels are 1-11 for 2.4 GHz and 36, 40, 44, 48, 52, 56, 60, 64, 100, 104, 108, 112, 116, 132, 136, 140 for 5 GHz. The following channels can also be activated depending on Regulatory Domain Scan (IEEE802.11d): 12, 13, 120, 124, 128, 149, 153, 157, 161, 165. Access Point: Supported channels are 1-11 for 2.4 GHz and 36, 40, 44, 48 for 5 GHz. RF output power: 18 dBm EIRP (including max antenna gain 3dBi) Max number of slaves for access point: 7 Power consumption: 54mA@24VDC Net data throughput: 20 Mbps. Link speed: max 130 Mbps (802.11n 2x2 MIMO) Security: WEP 64/128, WPA, WPA-PSK and WPA2, TKIP and AES/CCMP, LEAP, PEAP. | |
| Classic Bluetooth | Wireless standards (profiles): PAN (PANU & NAP) Operation modes: Access point or Client RF output power: 14 dBm EIRP (including max antenna gain 3dBi) Max number of slaves for access point: 7 Power consumption: 36 mA@24VDC Net data throughput: ~1 Mbps Bluetooth version support: Classic Bluetooth v2.1 Security: Authentication & Authorization, Encryption & Data Protection, Privacy & Confidentiality, NIST Compliant, FIPS Approved | |
| Bluetooth Low Energy | Wireless standards (profiles): GATT Operation modes: Central or Peripheral (pending) RF output power: 10 dBm EIRP (including max antenna gain 3dBi) Max number of simultaneous Peripheral connections: 7 Max number of Peripherals is virtually unlimited by multiplexing. Power consumption: 36 mA@24VDC Net data throughput: ~200 kbps Bluetooth version support: Bluetooth 4.0 dual-mode Security: AES-CCM cryptography | |
| CERTIFICATIONS | | |
| Europe | ATEX: ATEX Category 3, zone 2 according to EN60079-15, product marking: EX II 3 G nA IIC T4. CE, 2014/53/EU Radio Equipment Directive (RED) | |
| U.S. | FCC 47 CFR part 15, subpart B. UL: Ind. Cont. Eq. also Listed Ind. Cont. Eq. for Haz. Loc. CL1, DIV 2, GP A,B,C,D,T4. UL file: E203225 | |
| Canada | ICES-003 | |
| Japan | MIC | |
| Other countries | Argentina, Australia, Brazil, Chile, Colombia, India, Malaysia, Mexico, Peru, Phillipines, South Africa, Turkey, | |



Configuration

You can configure the Anybus Wireless Bridge by accessing the built-in web pages in the product. You can also use the push-button. Pressing sequences will configure the product. Instructions included.



Order a Starter Kit!

Includes: Two Wireless Bridges (AWB3000), Two Power Supplies (world), cabling, Quick Start Guide. Part number: AWB3300

Anybus® is a registered trademark of HMS Industrial Networks AB, Sweden, USA, Germany and other countries. Other marks and words belong to their respective companies. All other product or service names mentioned in this document are trademarks of their respective companies.
Part No: MMA404 Version 13 01/2020 - © HMS Industrial Networks - All rights reserved - HMS reserves the right to make modifications without prior notice.

