



# Anybus<sup>®</sup> Communicator<sup>™</sup> EtherNet/IP<sup>™</sup>

Rockwell Studio 5000 – EDS

## APPLICATION NOTE

SCM-1202-056 1.0 ENGLISH

---

# Important User Information

## Liability

Every care has been taken in the preparation of this document. Please inform HMS Industrial Networks AB of any inaccuracies or omissions. The data and illustrations found in this document are not binding. We, HMS Industrial Networks AB, reserve the right to modify our products in line with our policy of continuous product development. The information in this document is subject to change without notice and should not be considered as a commitment by HMS Industrial Networks AB. HMS Industrial Networks AB assumes no responsibility for any errors that may appear in this document.

There are many applications of this product. Those responsible for the use of this device must ensure that all the necessary steps have been taken to verify that the applications meet all performance and safety requirements including any applicable laws, regulations, codes, and standards.

HMS Industrial Networks AB will under no circumstances assume liability or responsibility for any problems that may arise as a result from the use of undocumented features, timing, or functional side effects found outside the documented scope of this product. The effects caused by any direct or indirect use of such aspects of the product are undefined, and may include e.g. compatibility issues and stability issues.

The examples and illustrations in this document are included solely for illustrative purposes. Because of the many variables and requirements associated with any particular implementation, HMS Industrial Networks AB cannot assume responsibility for actual use based on these examples and illustrations.

## Intellectual Property Rights

HMS Industrial Networks AB has intellectual property rights relating to technology embodied in the product described in this document. These intellectual property rights may include patents and pending patent applications in the USA and other countries.

Anybus® is a registered trademark of HMS Industrial Networks AB. All other trademarks mentioned in this document are the property of their respective holders.

---

# Table of Contents

Page

<b>1</b>	<b>Preface .....</b>	<b>3</b>
1.1	Document History .....	3
1.2	Document Conventions .....	3
<b>2</b>	<b>General.....</b>	<b>4</b>
2.1	Prerequisites .....	4
2.2	Data Exchange Model .....	4
<b>3</b>	<b>Anybus Communicator Configuration .....</b>	<b>5</b>
3.1	TCP/IP Configuration .....	5
3.2	I/O Data Sizes .....	8
<b>4</b>	<b>Studio 5000 Configuration .....</b>	<b>9</b>
4.1	EtherNet/IP Network Configuration .....	9
4.2	Downloading the Configuration .....	12
4.3	Online Monitoring.....	13
<b>5</b>	<b>Verification .....</b>	<b>14</b>
5.1	Node Monitor .....	14

**This page intentionally left blank**

# 1 Preface

This document explains how to configure EtherNet/IP communication between an Anybus Communicator and a Rockwell PLC using Rockwell Studio 5000.

More documentation and downloads can be found at [www.anybus.com/support](http://www.anybus.com/support). For more info regarding Rockwell Studio 5000, please visit the Rockwell Automation website.

## 1.1 Document History

Version	Date	Description
1.0	2017-11-06	First release

## 1.2 Document Conventions

Ordered lists are used for instructions that must be carried out in sequence:

1. First do this
2. Then do this

Unordered (bulleted) lists are used for:

- Itemized information
- Instructions that can be carried out in any order

...and for action-result type instructions:

- ▶ This action...
  - ➡ leads to this result

**Bold typeface** indicates interactive parts such as connectors and switches on the hardware, or menus and buttons in a graphical user interface.

Monospaced text is used to indicate program code and other kinds of data input/output such as configuration scripts.

This is a cross-reference within this document: [Document Conventions, p. 3](#)

This is an external link (URL): [www.hms-networks.com](http://www.hms-networks.com)



*This is additional information which may facilitate installation and/or operation.*



This instruction must be followed to avoid a risk of reduced functionality and/or damage to the equipment, or to avoid a network security risk.



### Caution

This instruction must be followed to avoid a risk of personal injury.



### WARNING

This instruction must be followed to avoid a risk of death or serious injury.

## 2 General

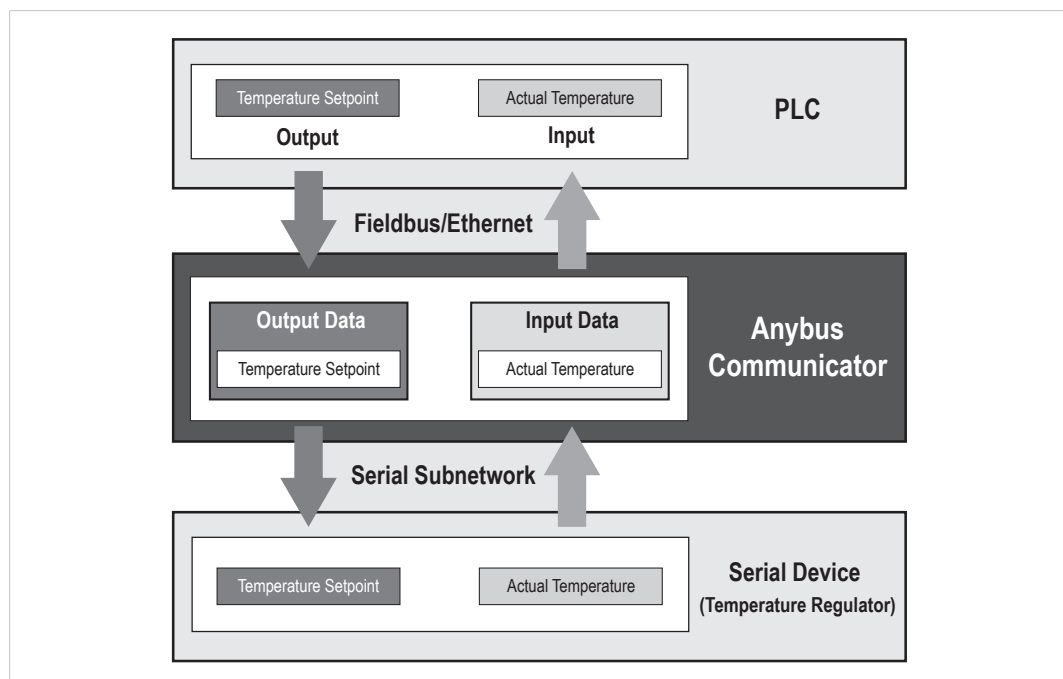
### 2.1 Prerequisites

- A basic knowledge of how to use Anybus Configuration Manager - Communicator RS232/422/485 and Rockwell Studio 5000 is assumed.
- The PLC must already be set up in Studio 5000.
- The subnetwork must already be configured in the Anybus Communicator.

### 2.2 Data Exchange Model

The data to be exchanged between the serial subnetwork and the fieldbus or industrial Ethernet network reside in the same internal memory in the Anybus Communicator. In order to exchange data with the serial subnetwork, the fieldbus or Ethernet network reads and writes data to memory locations that have been specified in Anybus Configuration Manager - Communicator RS232/422/485. These memory locations are then exchanged on the subnetwork.

In this example, a temperature regulator in the serial subnetwork exchanges data with a PLC via the internal memory buffers in the Communicator.



**Fig. 1** Example of data exchange

See also the User Manual for the Anybus Communicator.

## 3 Anybus Communicator Configuration

This section describes how to set up TCP/IP communication and configure I/O data sizes in the Anybus Communicator.

In this example **TCP/IP Settings** must be set to **Disabled** in Anybus Configuration Manager - Communicator RS232/422/485.

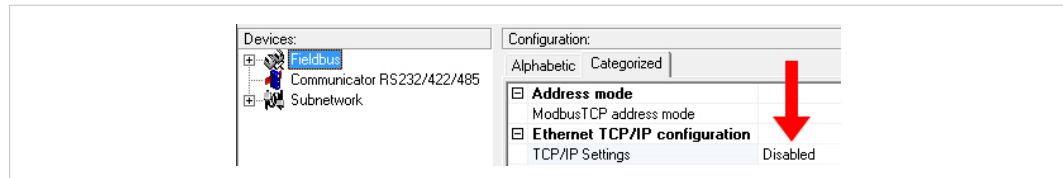


Fig. 2 Anybus Configuration Manager

### 3.1 TCP/IP Configuration

#### 3.1.1 Installing the IPconfig Utility

*IPconfig* is a Windows-based tool for configuration of TCP/IP settings in HMS devices. The tool will detect all compatible and active HMS devices on the local network.

1. Download IPconfig from [www.anybus.com/support](http://www.anybus.com/support).
2. Unpack the contents of the zip archive and run the installer program.

#### 3.1.2 Scanning for Connected Devices

When IPconfig is started it will automatically scan all available local networks for HMS devices. Detected devices will be listed in the main window. To refresh the list, click on **Scan**.



A device can only be detected if the computer running IPconfig has an active network interface on the same IP subnet.

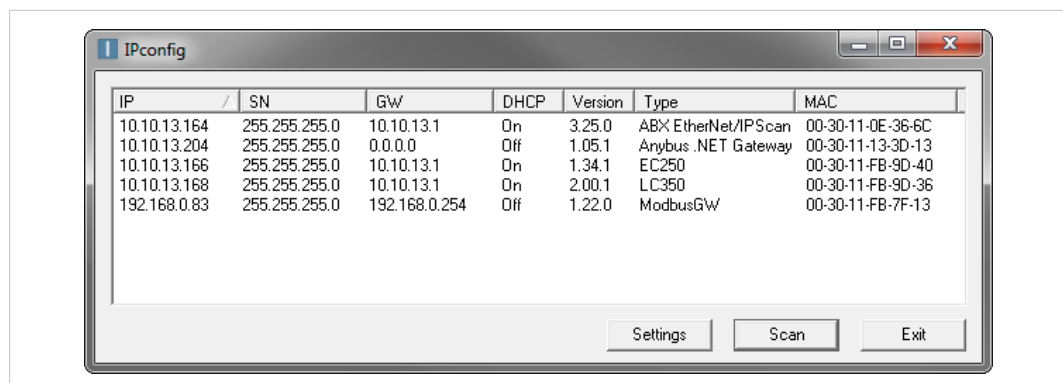
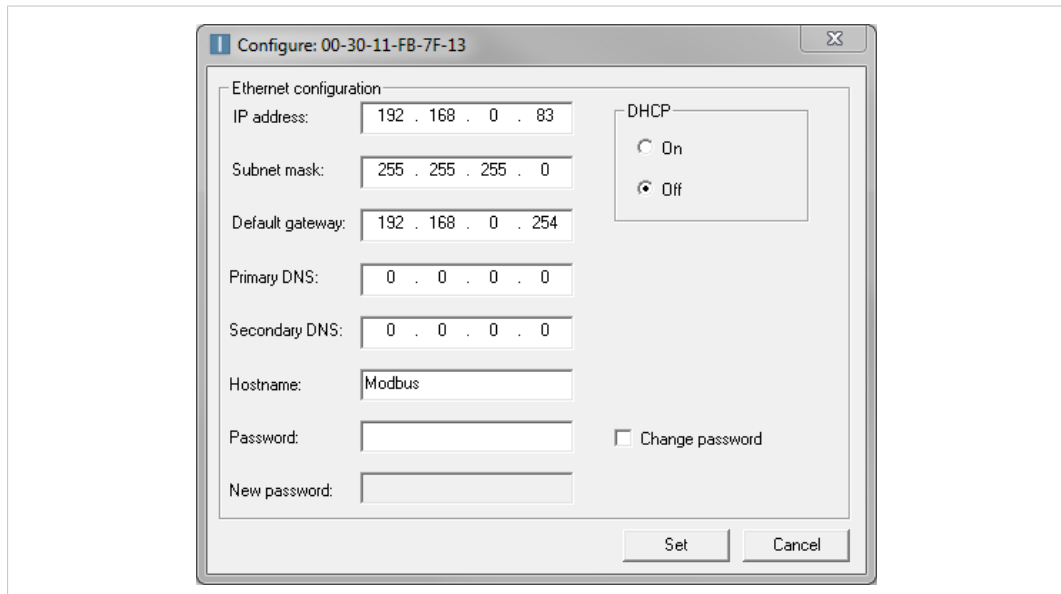


Fig. 3 IPconfig main window

<b>IP</b>	IP address of the device
<b>SN</b>	Subnet mask
<b>GW</b>	Default gateway
<b>DHCP</b>	Automatically managed IP configuration
<b>Version</b>	Firmware version
<b>Type</b>	Product name
<b>MAC</b>	Ethernet MAC address (System ID)

### 3.1.3 Ethernet Configuration

To change the IP settings for a device, double-click on the entry in the main window or right-click on it and select **Configuration**.



**Fig. 4 Ethernet configuration**

Enter static IP settings as required, or select DHCP if using dynamic IP addressing.



Do not enable DHCP if there is no DHCP server available on the network.

You can add a name for the device in the **Hostname** field. Only characters a–z, A–Z, 0–9 and \_ (underscore) are allowed.

The default password for changing IP settings is blank (no password). If a password has been set for the device you must enter it to be able to change the settings.

To set a new password, check the **Change password** box and enter the current password in the **Password** field, then enter the new password in the **New password** field.



For security reasons the default password should always be changed.

Click on **Set** to save the new settings. The device will reboot automatically.



### 3.1.4 IPconfig Settings

Additional settings for IPconfig can be accessed by clicking on **Settings**.

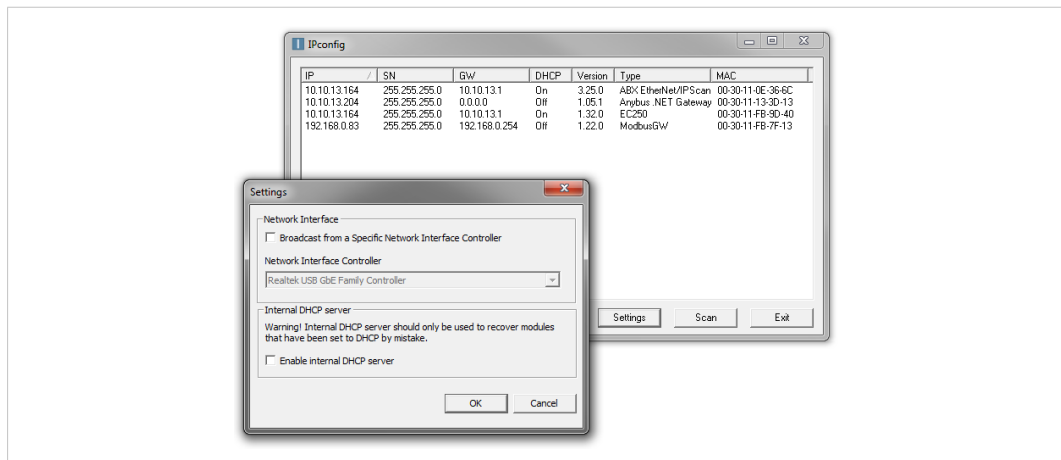


Fig. 5 IPconfig settings

#### Network Interface

Check this option to select a specific network interface to use when scanning for devices from a computer which has more than one interface. If this option is left unchecked, all available networks will be scanned.

#### Internal DHCP Server

If a device has been set to use DHCP but there is no DHCP server on the network, the device may not be detected by IPconfig. To recover access to the device an internal DHCP server in IPconfig can be temporarily activated:

1. Click the checkbox for **Internal DHCP Server**, then click **OK**. IPconfig will automatically refresh the scan and list the missing device in the main window.
2. Select the device and configure it to use static IP addressing instead of DHCP.
3. Disable the internal DHCP server.



Do not enable the internal DHCP server if there is already an active DHCP server on the network.

## 3.2 I/O Data Sizes

The serial configuration for each application in Anybus Communicator will have a different amount of input/output data size. In this example, the application has been set up for 10 bytes of input data and 3 bytes of output data.

In Anybus Configuration Manager - Communicator RS232/422/485, right-click on **Subnetwork** and select **Subnetwork Monitor** to check the data size of the application:

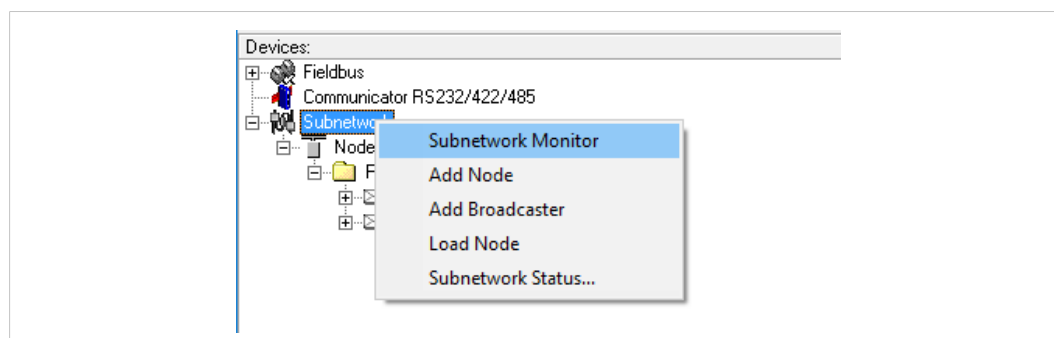


Fig. 6 Accessing the Subnetwork Monitor

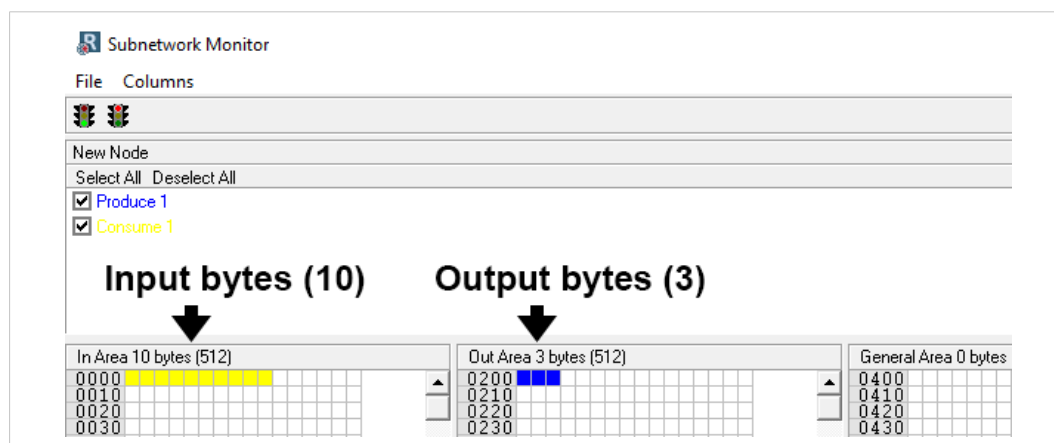


Fig. 7 Subnetwork Monitor

If no boxes are colored, the serial interface of the Anybus Communicator has not yet been configured. You must configure serial communication before proceeding.

## 4 Studio 5000 Configuration

This section describes how to configure the EtherNet/IP interface of the Anybus Communicator in Studio 5000 with EDS configuration.

The PLC must be configured before continuing to configure the EtherNet/IP network.

### 4.1 EtherNet/IP Network Configuration

1. Make sure that Studio 5000 is in **Offline** mode.
2. Download the EDS file for the Anybus Communicator from [www.anybus.com/support](http://www.anybus.com/support).
3. Open the **Hardware Installation Tool** wizard from the Start Menu or from the Tools menu in Studio 5000 and follow the on-screen instructions to install the EDS file.

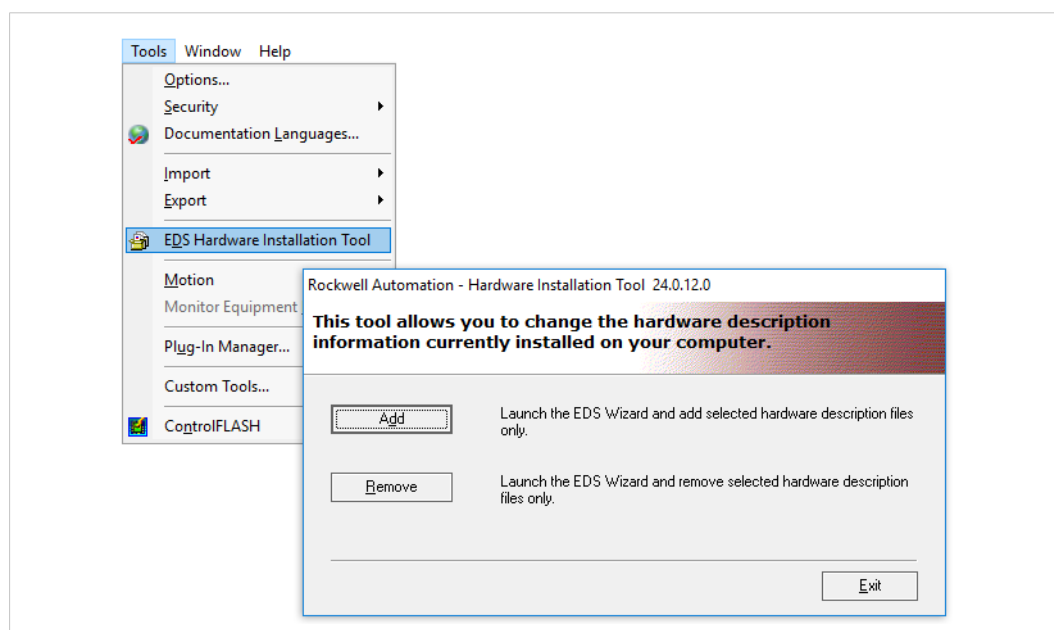


Fig. 8 Hardware Installation Tool

4. Right-click on the EtherNet/IP bridge in the I/O configuration, and select **New Module**

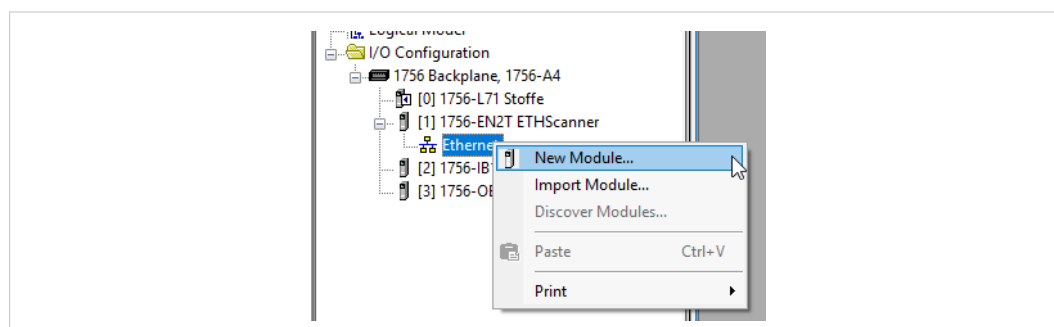
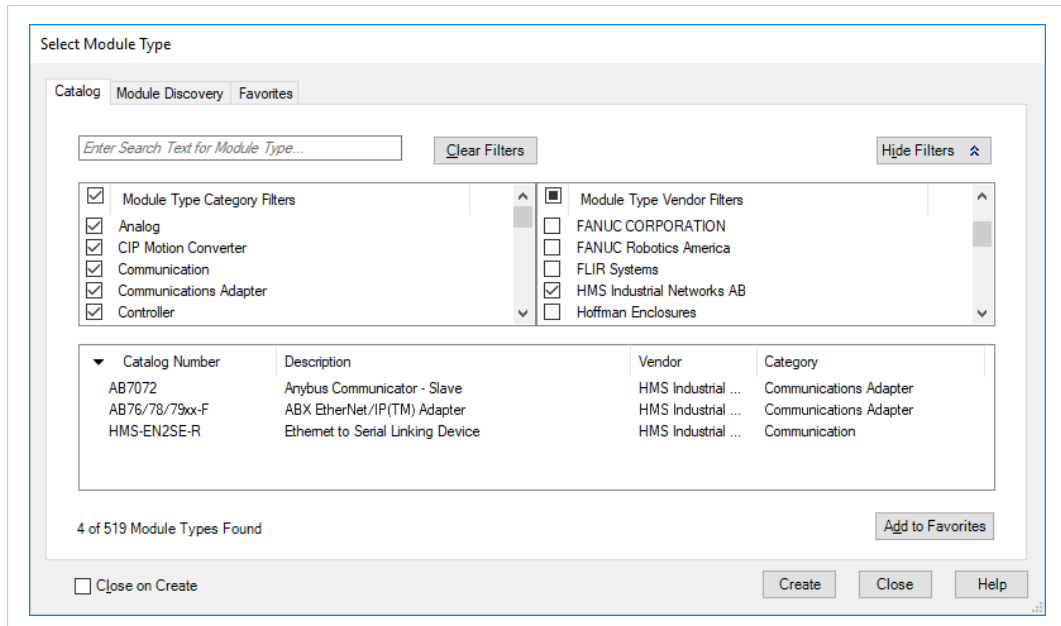


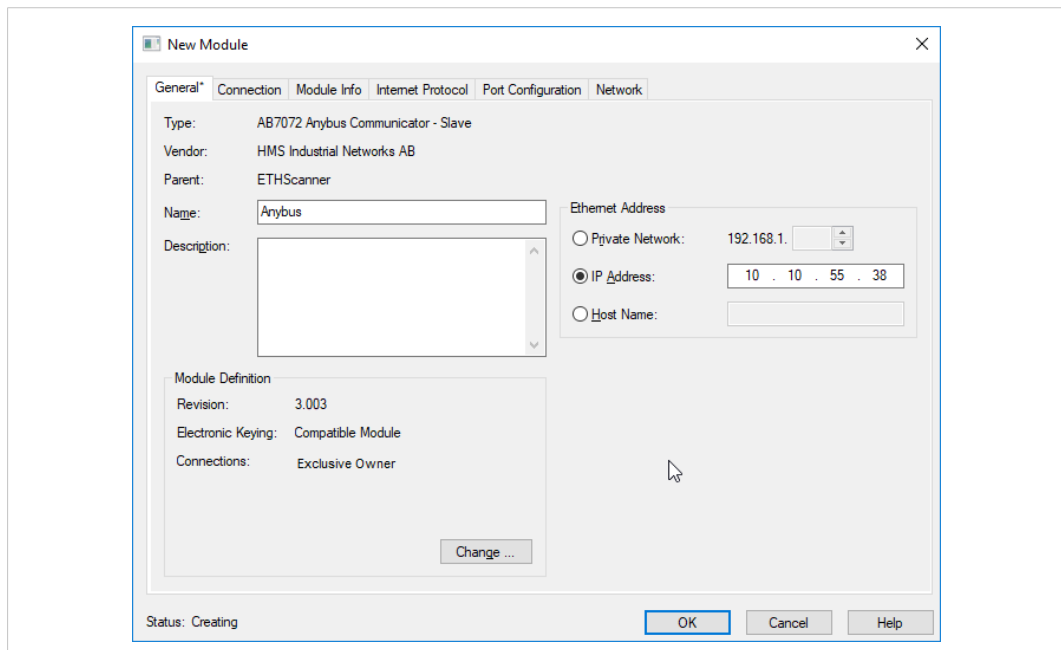
Fig. 9 Adding a module

5. In the **Catalog** tab, select the entry for the Anybus gateway and click on **Create**.



**Fig. 10 Module catalog**

6. In the **Module Properties** window, enter a name for the new module. In this example the module will be named **Anybus**. This will create a tag in Studio 5000 which can be used to access the memory location in the PLC where the data for the Communicator is stored.



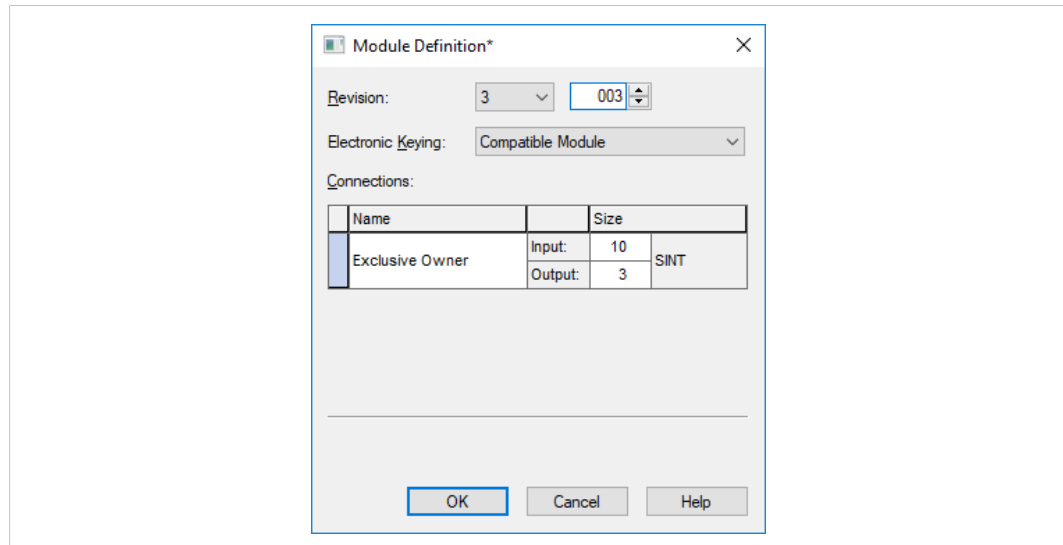
**Fig. 11 Module Properties**

7. Enter the **IP address** for the module.



The IP address of the module must be in the same subnet as the PLC.

8. Click on **Change** to open the **Module Definition** window.



**Fig. 12 Module Definition**

9. Select the data type. In this example, **SINT** is selected, which will represent the data in the Anybus Communicator as a field of 8-bit values.  
Other options are **INT**(16-bit values), or **DINT** (32-bit values).
10. Enter input and output data sizes corresponding to the data sizes configured for the Anybus Communicator, in this case 10 bytes input and 3 bytes output.
11. Click on **OK** to confirm and close the dialog.
12. Click on **OK** in the **Module Properties** window, then click on **OK** again in the next dialog to confirm.

The Anybus Communicator has now been added to the I/O configuration in Studio 5000.

## 4.2 Downloading the Configuration

1. Download the offline project to the PLC.

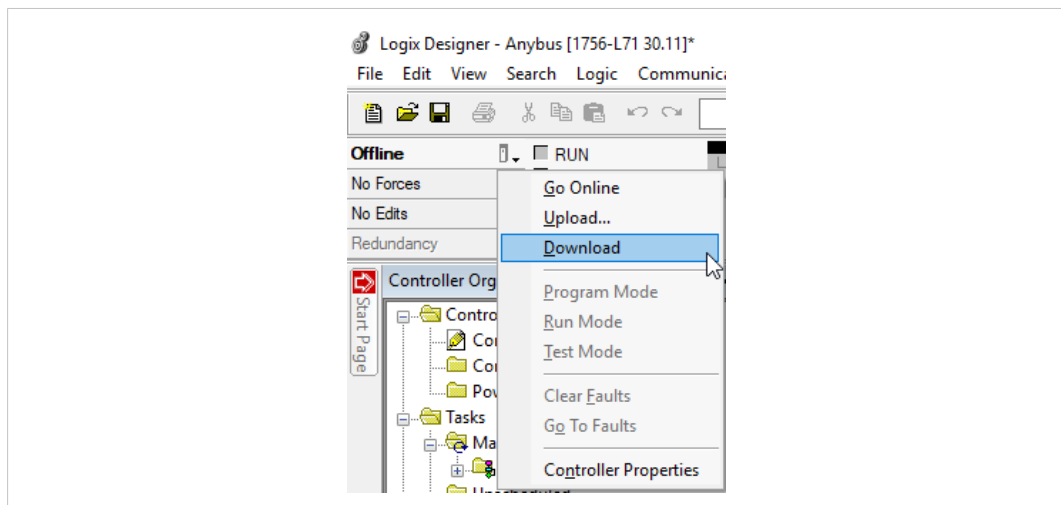


Fig. 13 Download offline project

2. Click on **Download** in the following dialog to confirm.

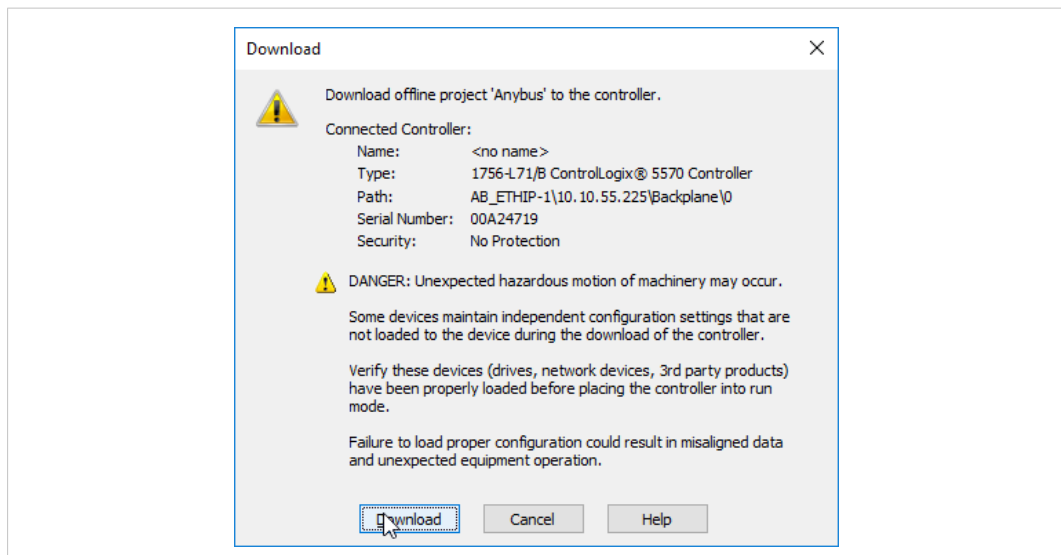


Fig. 14 Confirm download

The configuration will now be downloaded to the PLC.

## 4.3 Online Monitoring

When Studio 5000 is online, the **Controller Tags** view can be used to verify that data communication is working. See also [Verification](#), p. 14.

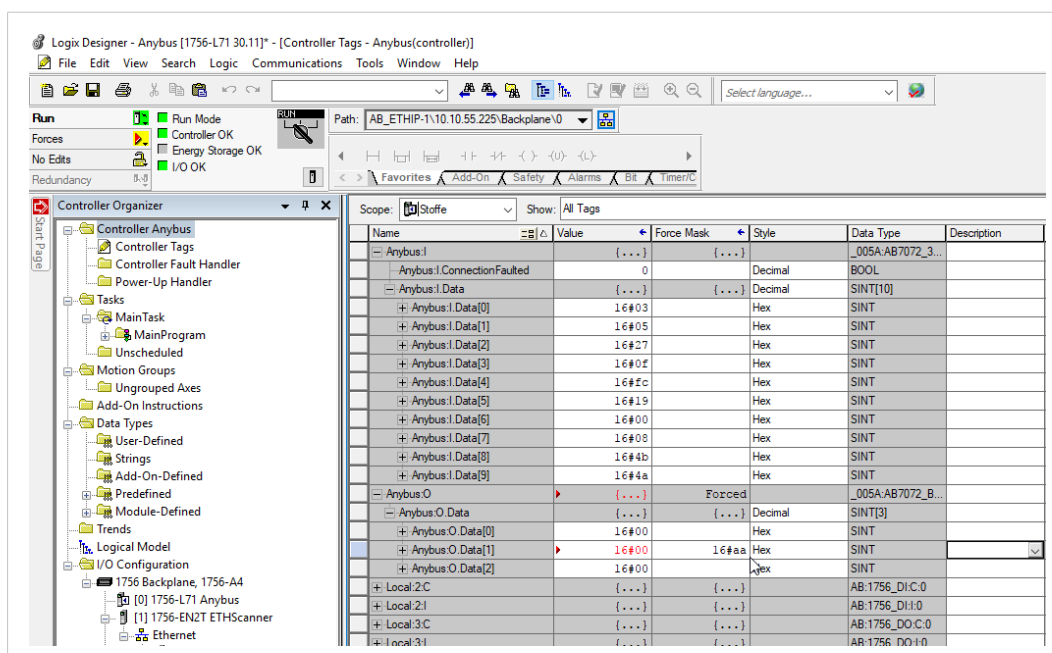


Fig. 15 Online with forced values

## 5 Verification

### 5.1 Node Monitor

The *Node Monitor* in Anybus Configuration Manager - Communicator RS232/422/485 shows the current input and output data in the Anybus Communicator, and can be used to verify that data communication is working.

- When online, right-click on the node in Anybus Configuration Manager - Communicator RS232/422/485 and select **Node Monitor**.

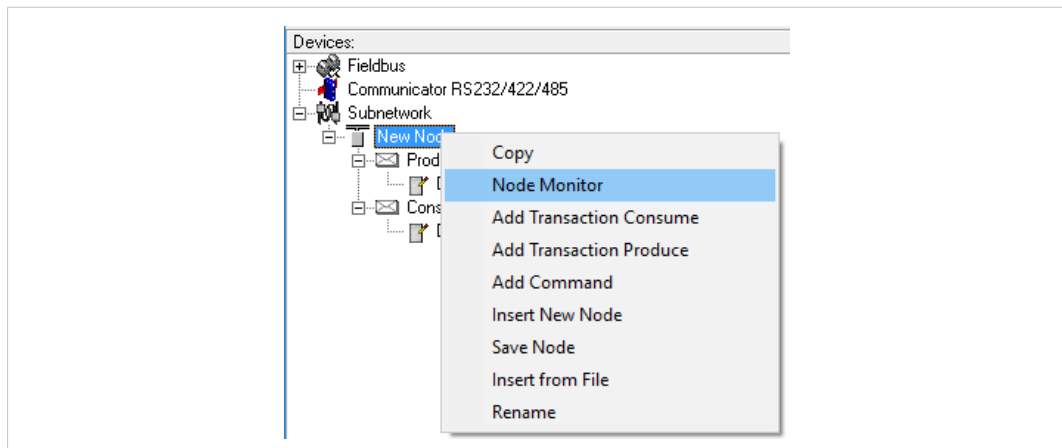


Fig. 16 Open the Node Monitor

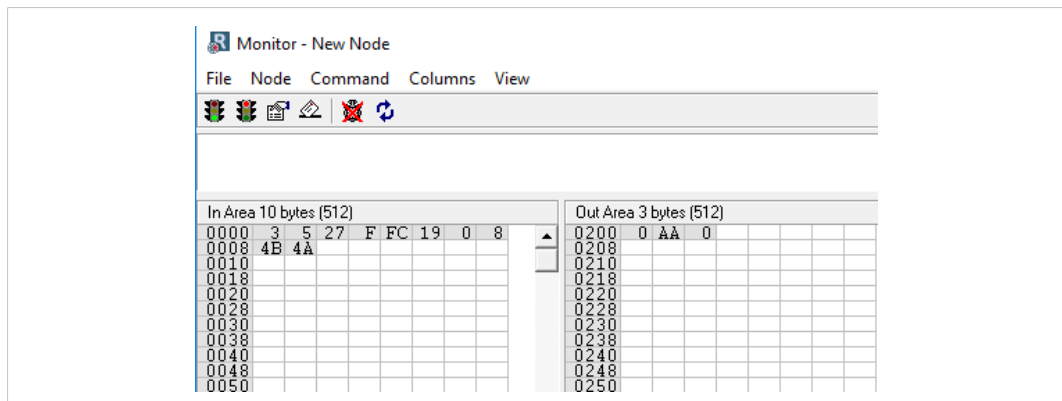


Fig. 17 Node Monitor

The input and output bytes are represented as grey boxes in the Node Monitor. The values shown inside the boxes are the actual data values in Anybus Communicator. This also matches the data shown in Studio 5000.

The force value from the PLC (00AA) can here be seen in the **Out Area**.



**This page intentionally left blank**

